

Metastatic breast cancer: What are the advances and what still needs to be done.

Professor Arlene Chan

School of Medicine, Curtin University

Director Breast Clinical Trials Unit, Mount Hospital

Vice-chair Breast Cancer Research Centre - WA

Advances

- “New” pathways to attack in breast cancer cells
- Drugs
- Breast surgery for metastatic disease
- Radio-surgery

Still to be done

- Predicting which patients will respond
- Reducing side effects
- Is immune cells important in breast cancer?
- How to deal with the uncertainty?
- Better education about MBC in the community

“Basic Anatomy”

TNM Staging for Breast Cancer

M CATEGORY

Metastases in:

Bone

Lung

Liver

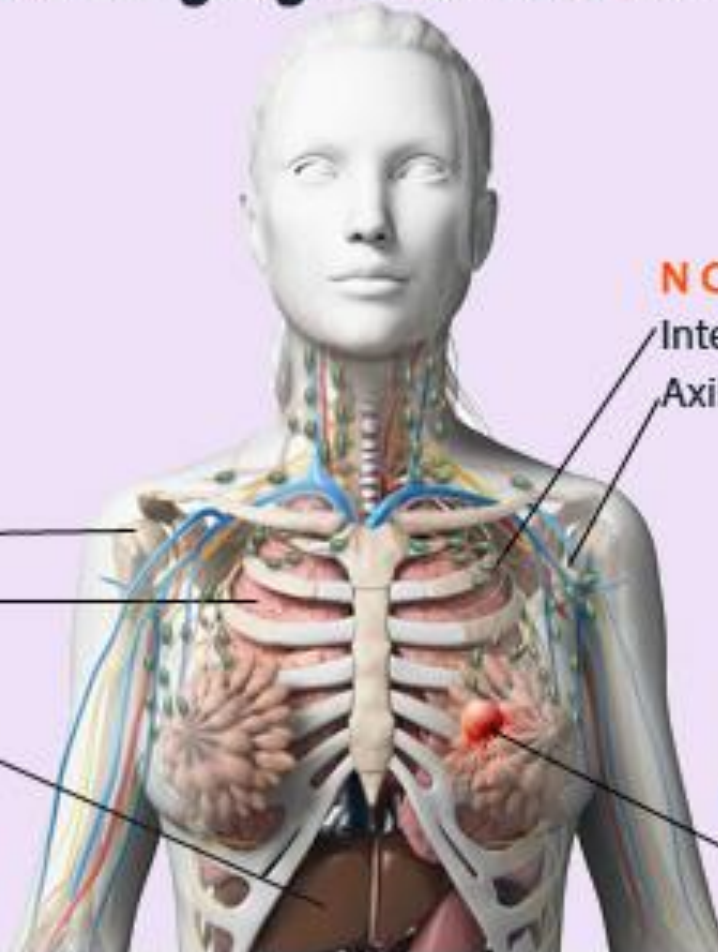
N CATEGORY

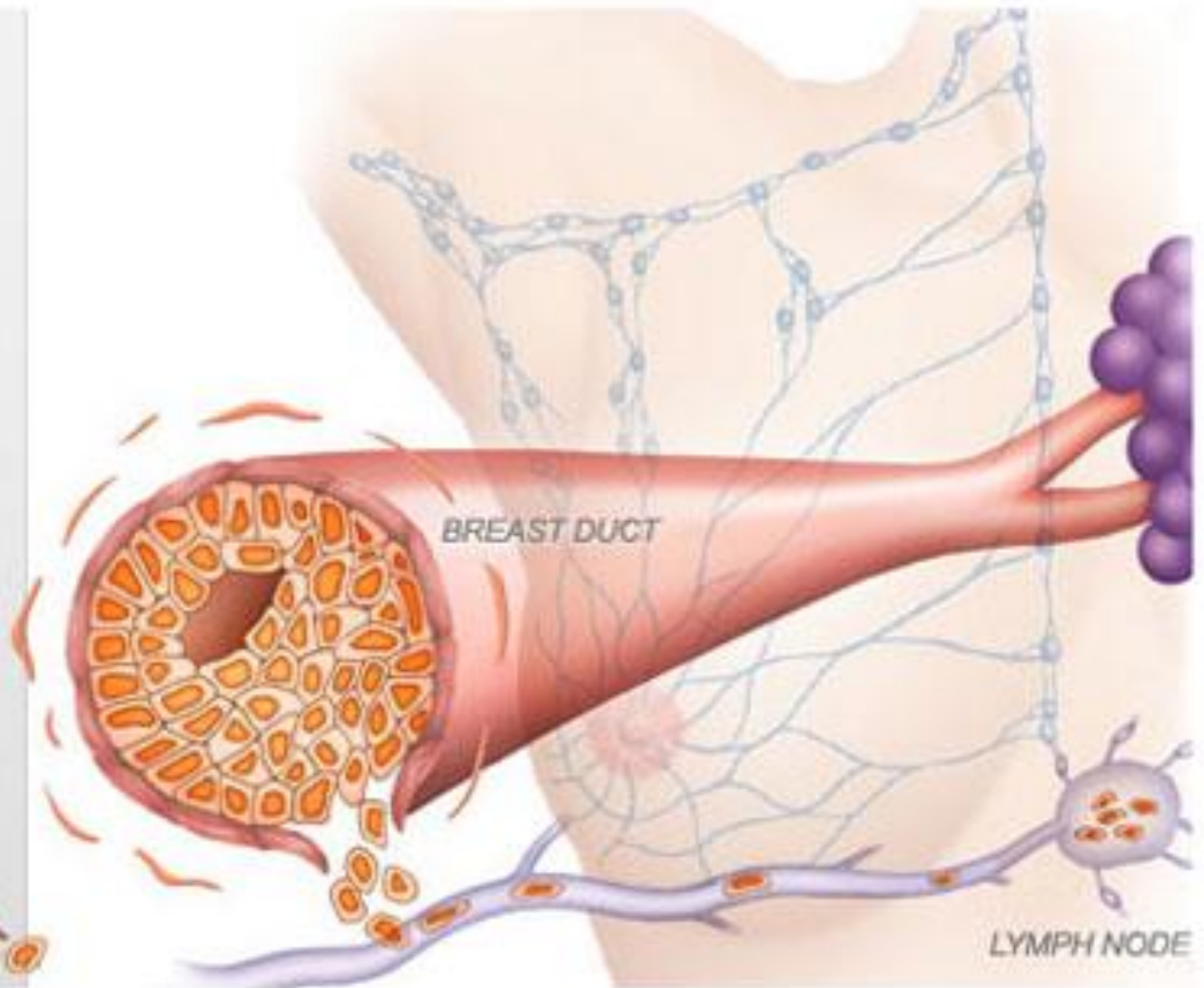
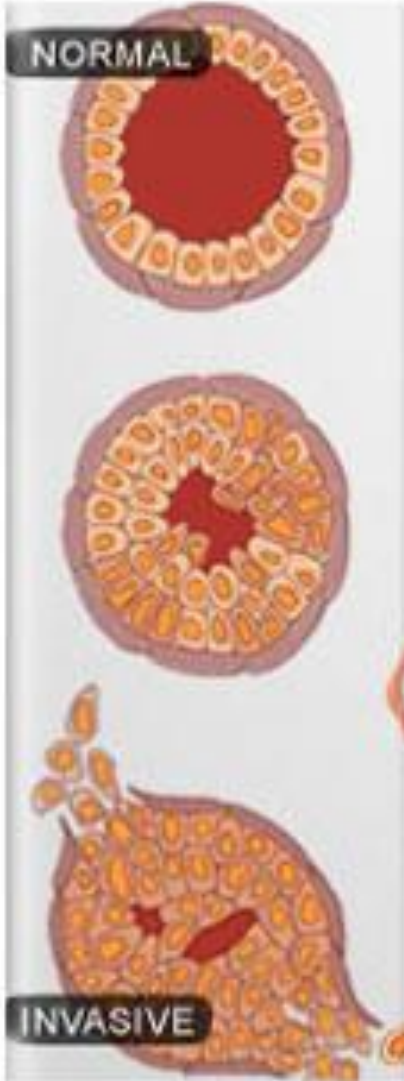
Internal mammary node

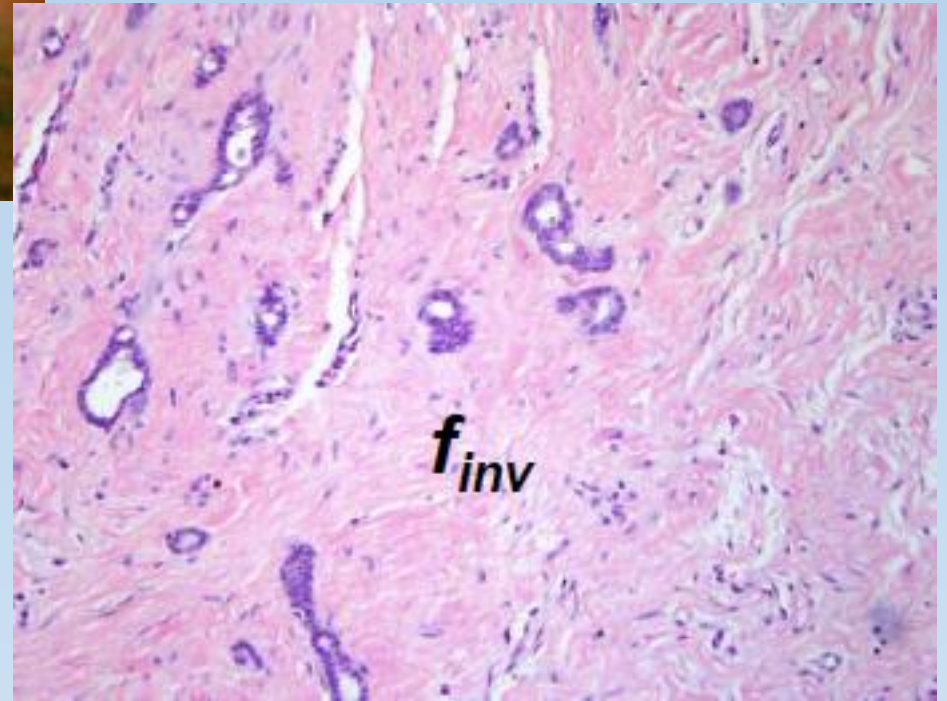
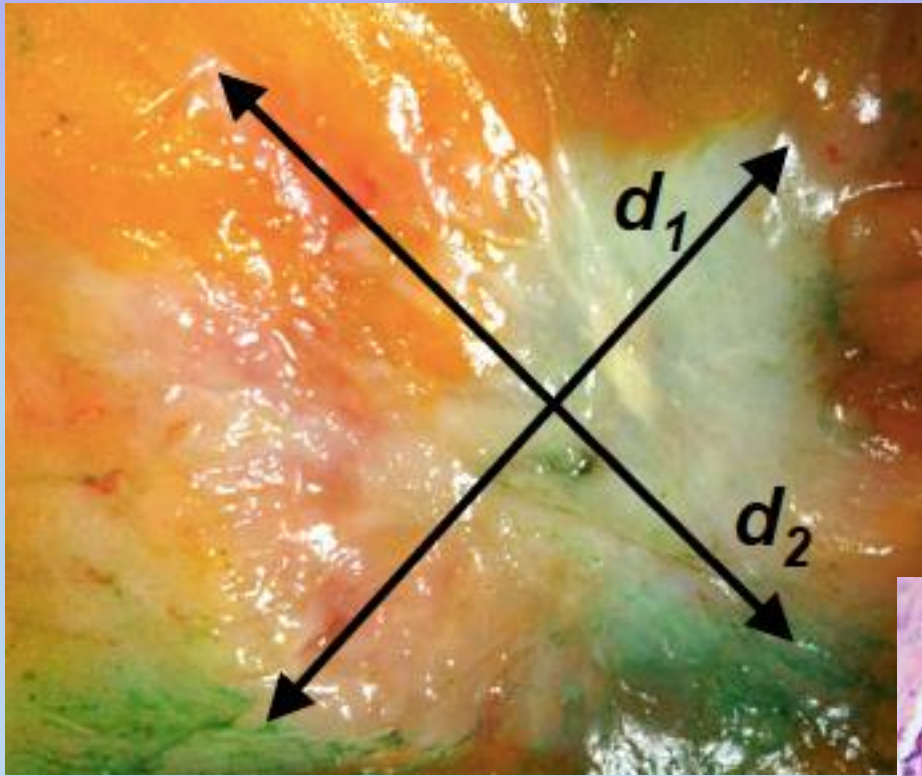
Axillary node

T CATEGORY

Breast cancer primary







Stages of breast cancer

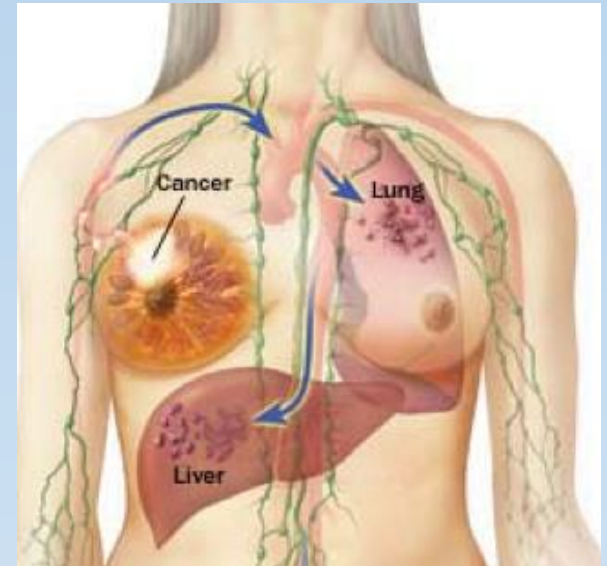
Stage 0
DCIS

Stage I
Early
Smaller

Stage II
Early
Larger/nodes

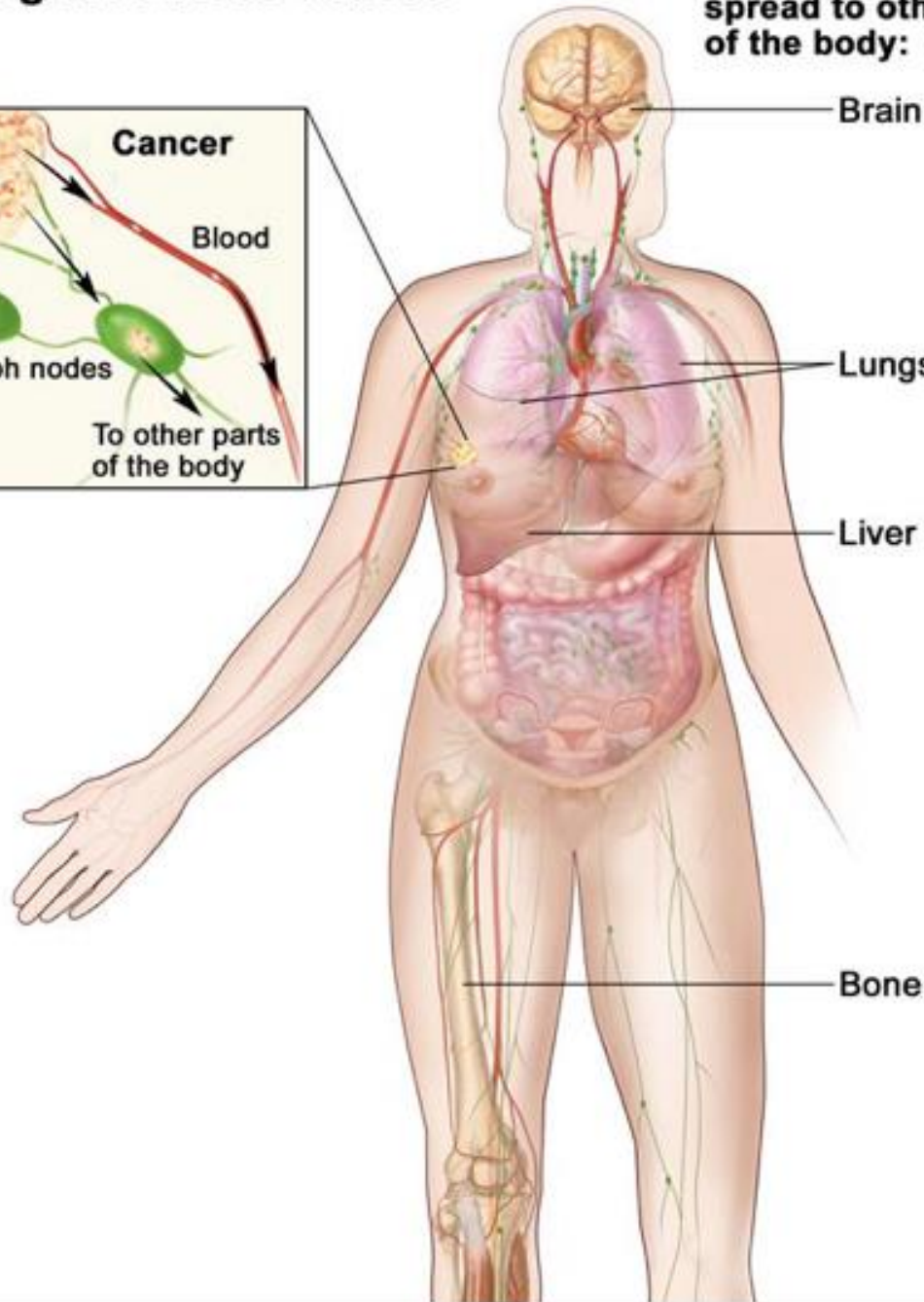
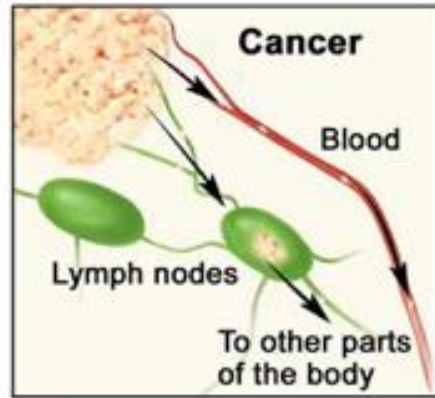
Stage III
Locally
advanced

Stage IV
Metastatic

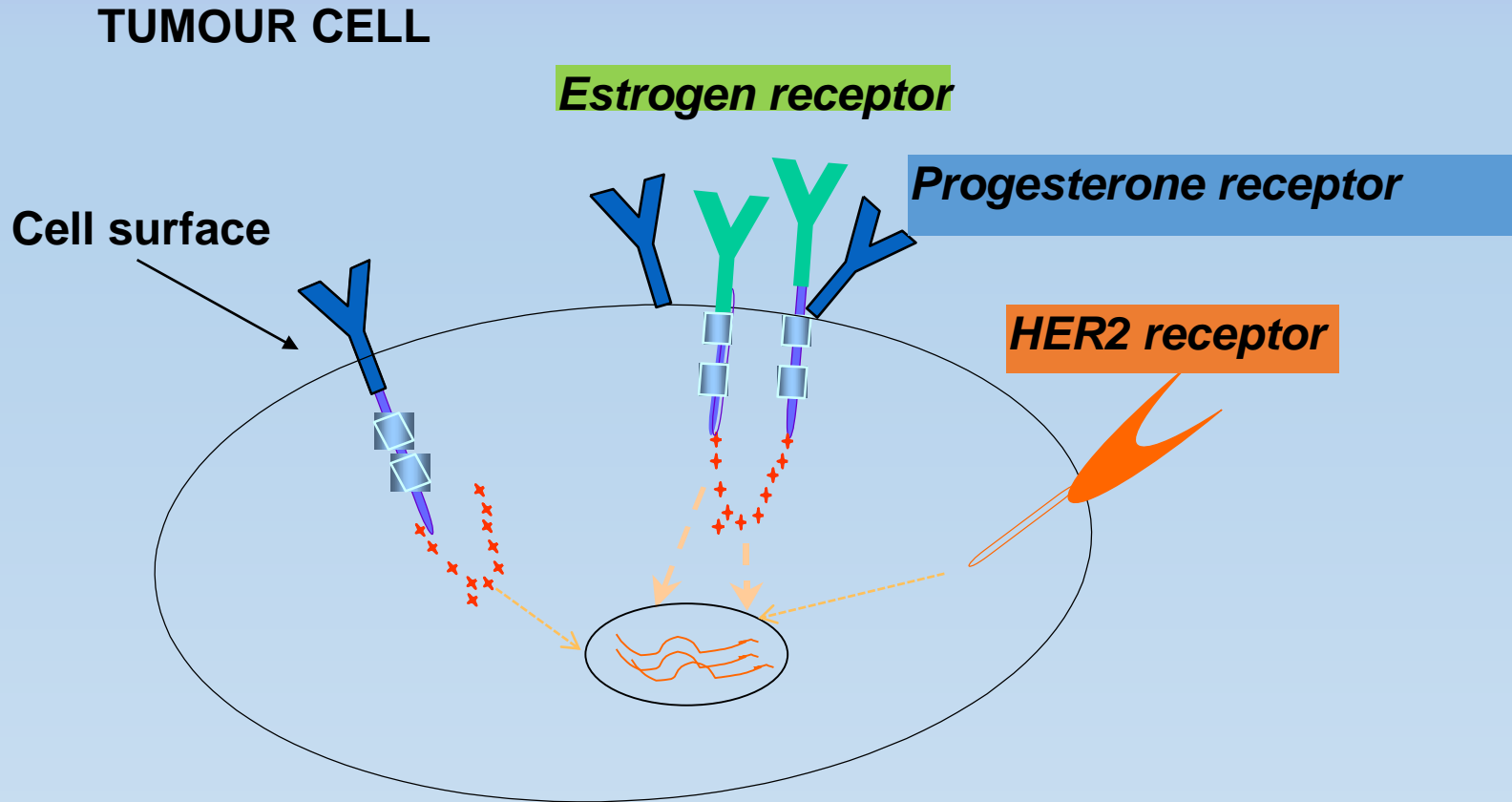


Stage IV Breast Cancer

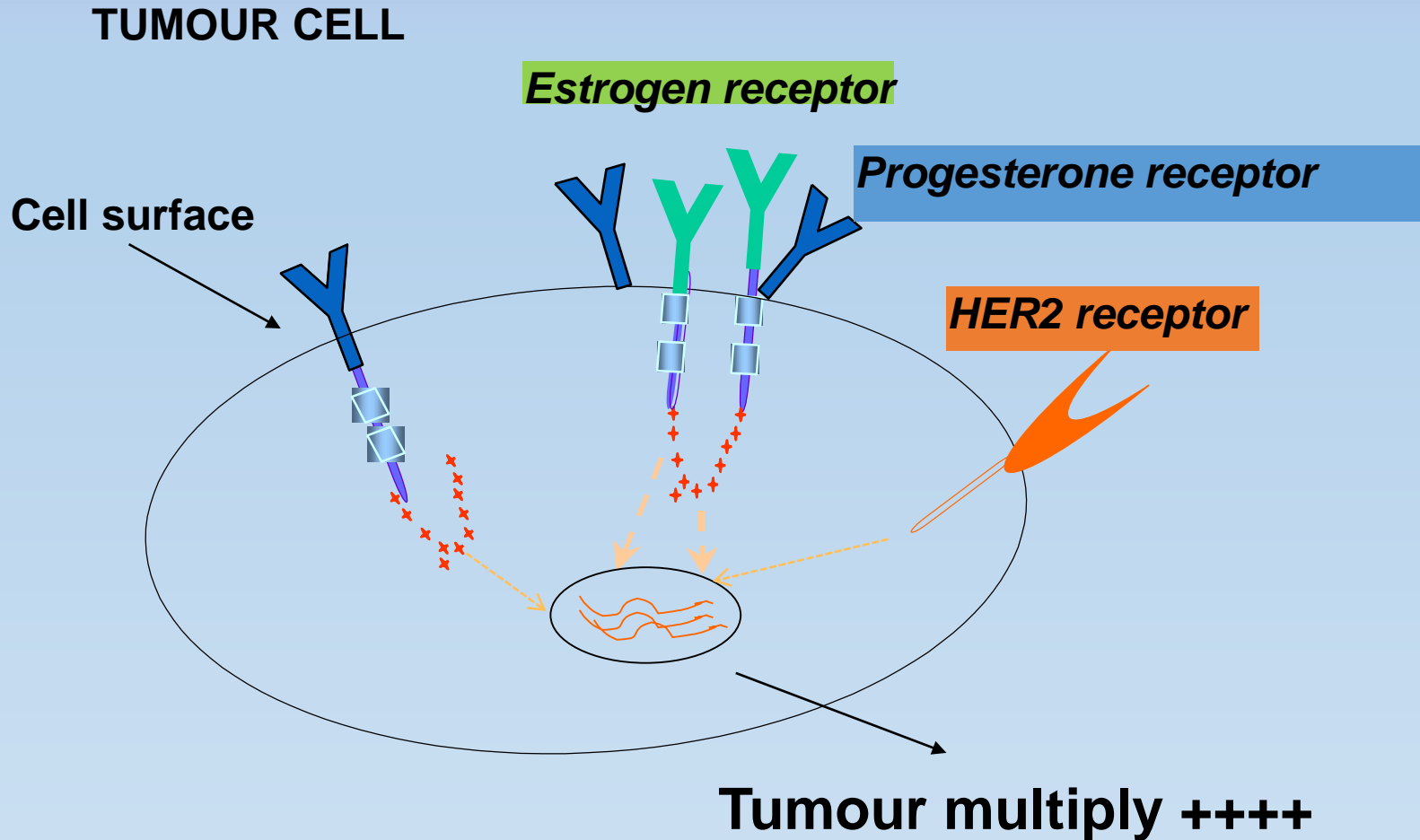
Breast cancer has spread to other parts of the body:



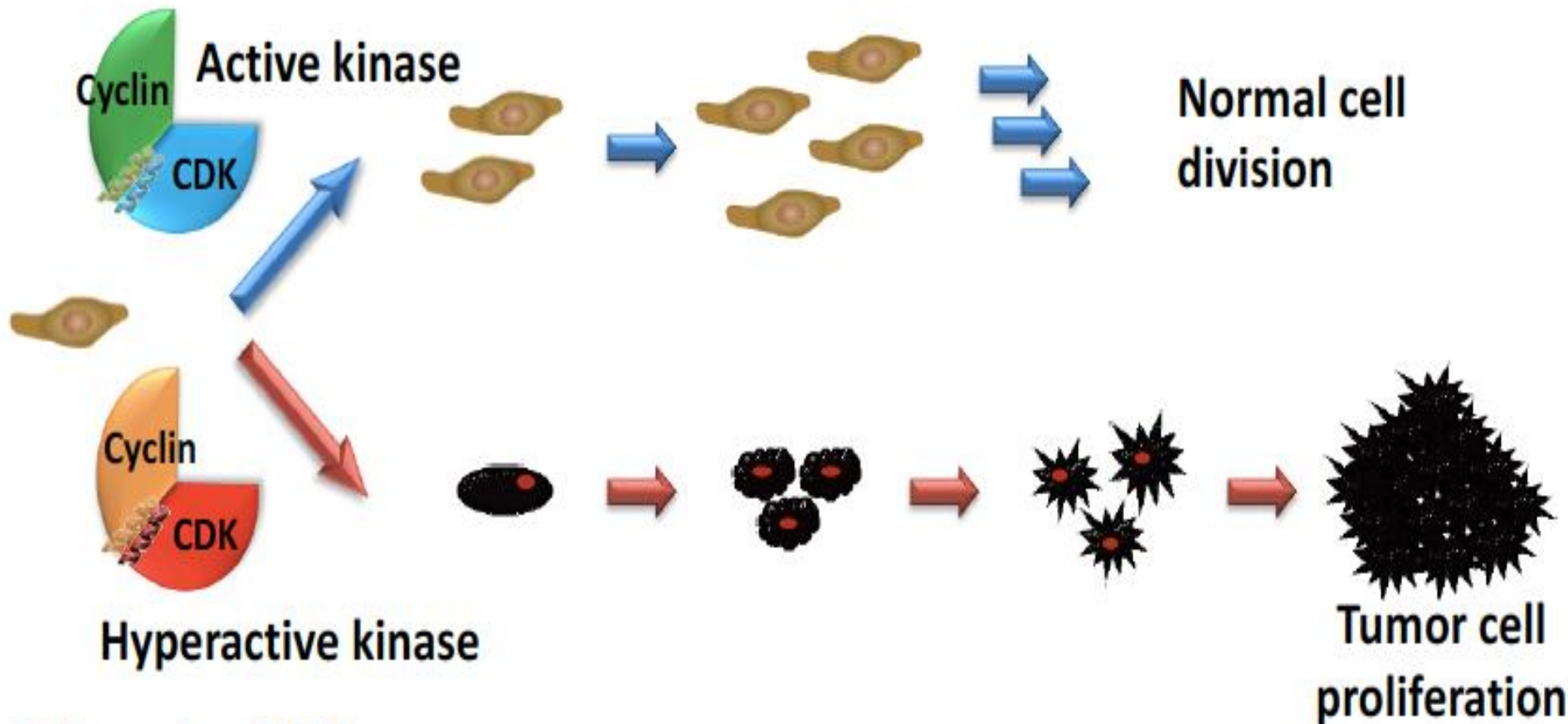
Breast cancer types



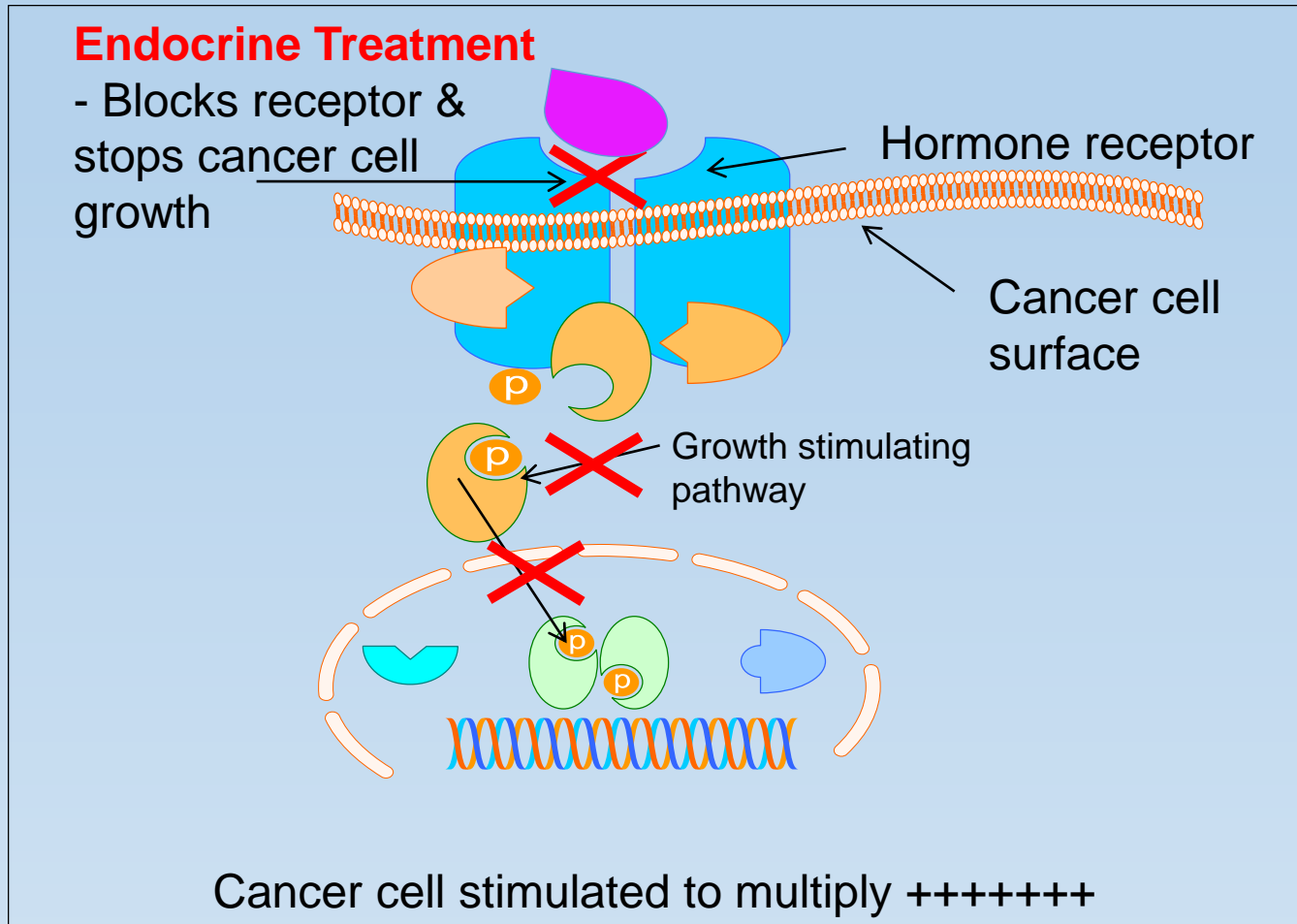
Breast cancer types



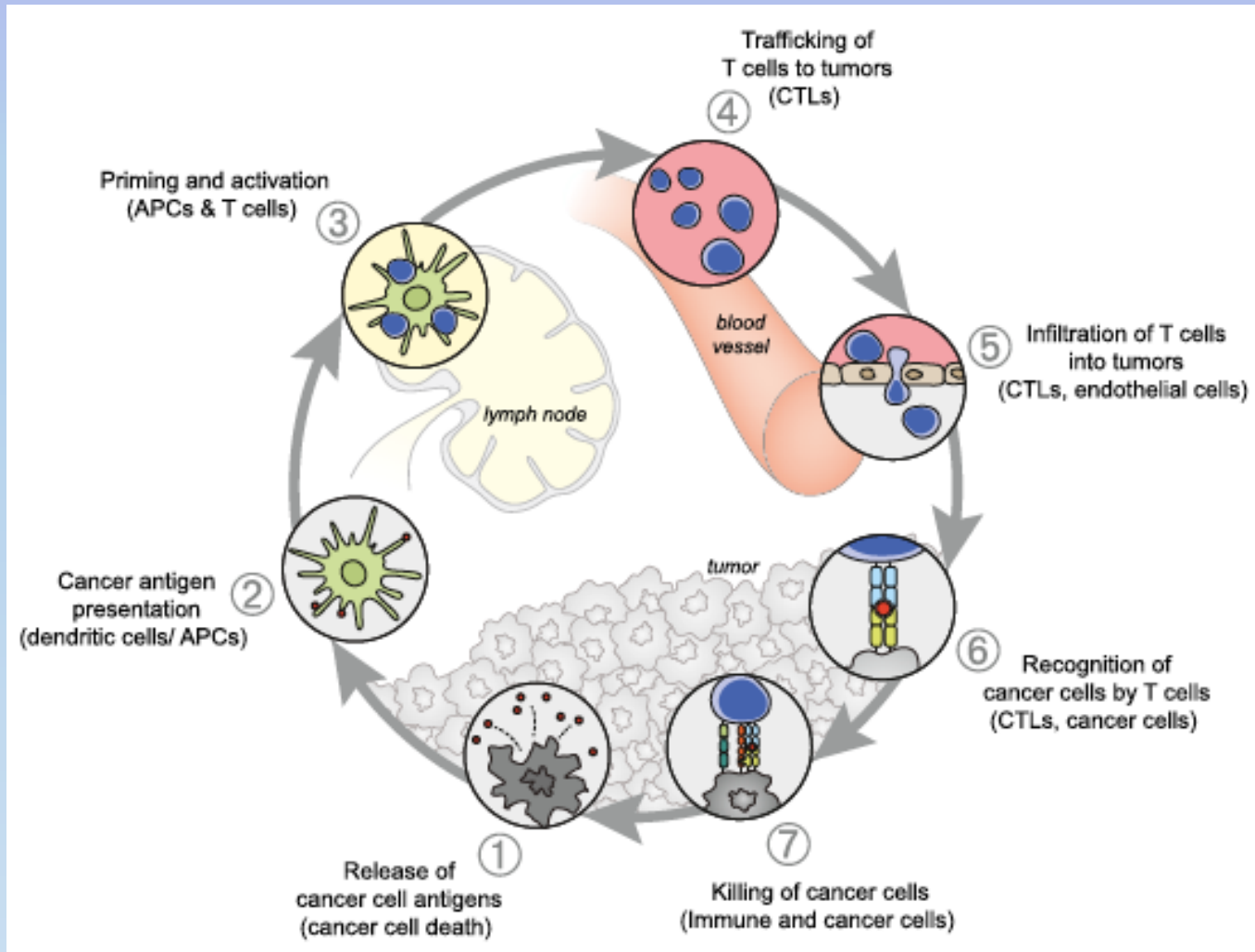
New pathways: Cyclin-dependent kinases (CDK)



New pathways: PI3K – AKT - mTOR



New pathways: Immune cells



Drugs: New

- Palbociclib
- Ribociclib
- Abemaciclib
- Everolimus
- Pembolizumab

- More tablet formulations

Drugs: New

- Palbociclib
- Ribociclib
- Abemaciclib
- Everolimus
- Pembolizumab

- More tablet formulations

Pros and Cons

- Cost on Medicare or not
- Clinical trial
- Access across institutions
- Different side effect profile
- Time to response
- “Pseudo-progression”

Drugs: Questions you have

- What aspects of drugs used in breast cancer are of interest to you
- How much information do you want about the drug that you are taking?
- What are the aspects of taking tablets vs. injections vs. infusions that are important to you

Role of surgery in MBC

For the primary breast lump

- If symptomatic
- Once the other sites are under control
- Individualised decision
- Reconstruction should be considered

Not for the secondaries

- Not helpful
- Does not extend life
- May worsen quality of life
- Interferes with drug treatment

Role of radio-surgery in MBC

- Very focused radiation therapy
- For specific problem areas:
Brain, Liver, Lung
- Highly specialised
- May be repeated in certain circumstances
- Avoids side effects

BCRC-WA – Trials to date?

- To date, 76 clinical trials
- Recruited 1016 patients
- Trials evaluating:
 - More effective drugs
 - Better ways of giving treatment
 - Non-drug interventions
 - Exercise, Cold caps, Emu oil
 - Brain metastases – how common & outcome
 - Molecular behavior & impact on recurrence

BCRC-WA – How about 2016?

- Survivorship study after early breast cancer
 - Relationships, Employment, Psychosocial, Fatigue
- AREA – Exercise trial to reduce fatigue - recruiting
- Several new drugs:
 - BRCA mutations carriers
 - Triple negative breast cancer
 - Specifically for Brain metastases
- Educate rural MD's and nurses
- National survey of oral anti-cancer therapy

PYNKS

- Website – we want your opinion
- BCRC-WA is re-locating to Hollywood Hospital
- How can this group help you and help others?